



District Data Profile 2006-2007



Education
Service
Agency
Region 2

Elk Point- Jefferson School District



School Mission

The mission of the Elk Point-Jefferson School is to provide a safe environment where students will be empowered with knowledge and skills to achieve successfully.

School Vision

Our VISION is to equip our students to become effective communicators and responsible citizens in an increasingly demanding society.

Inside this profile:	
Demographic Profile	1
Special Education Profile	2
College Admissions Profile	3
Dakota STEP Results - Reading	4
Dakota STEP Results - Math	6
Stanford Writing Assessment Results	8
Adequate Yearly Progress	9
Notes & Definitions	10

This District's Profile:

This profile summarizes data reported by the South Dakota Department of Education and other entities for the Elk Point-Jefferson School District. It is designed to share longitudinal data and does not include interpretations of that data. Adequate Yearly Progress (AYP) is not measured by all of the data in this profile.

Please feel free to make additional copies of this profile.

This free publication was created as a service by Education Service Agency, Region 2, 715 East 14th Street, Sioux Falls, SD 57104.

605.367.7680. www.edec.org/esa



Elk Point-Jefferson
School Data Profile
2006-2007



Elk Point-Jefferson School District Data Profile

1 – Demographic Data

Elk Point School District 61-7

402 South Douglas
Elk Point, SD 57025

Superintendent: Brian Shanks

District Schools:

Elk Point-Jefferson High School
Elk Point-Jefferson Middle School
Elk Point-Jefferson Elementary School

Home County: Union

Area in Square Miles: 166.49

District Enrollment

	2003-04	2004-05	2005-06	2006-07
Enrollment K-12*	657	693	692	702
ADM K-8**	506	488	465	474
ADM 9-12**	174	204	227	223
Open Enrolled Students	10	15	13	17
District Drop-Out Rate	0.9%	0.3%	0.3%	0.8%
District Attendance Rate	96.8%	97.2%	97.4%	97.4%

*Fall Enrollment numbers for the given year **ADM (Average Daily Membership)

Student Profile

	2003-04	2004-05	2005-06	2006-07
Students Transported	359	365	344	344
Student to Staff Ratio	14.6	15.3	16	14.7
Number of Graduates	28	43	44	44
Graduation Percentage	96.43%	97.73%	97.78%	95.65%
Percent of Students Eligible for Free/ Reduced Lunch	18.9%	18.6%	17.3%	19.8%
Percentage of Students with Special Needs	11.3%	11.0%	9.9%	9.4%

Staff Profile

	2003-04	2004-05	2005-06	2006-07
Certified Instructional Staff (# FTE)	47.3	46.2	43.6	48.7
Average Years of Experience	15.2	15.3	15.3	14.1
% With Advanced Degrees	14.6%	17.0%	18.2	26.5
Teachers with Emergency or Provisional Credentials	0.0%	1.2%	1.3%	0.0%
Classes Not Taught by Highly Qualified Teachers	0.0%	2.4%	3.8%	0%
Classroom Staff	0.0	0.0	0.0	0.0
Average Teacher Salary	\$31,473	\$31,837	\$32,545	\$32,530



2 – Special Education Profile

Disability Prevalence

	2003-04	2004-05	2005-06	2006-07
Autism	2	4	6	3
Speech/Language	30	34	23	29
Mental Retardation	9	9	8	7
Learning Disabled	27	21	21	21
Multiple Disabilities	3	2	2	2
Orthopedic Impairments	1	0	0	0
Emotionally Disturbed	1	0	0	0
Other Health Impaired	3	3	2	3
Developmental Delay	1	4	6	1
Visually Impaired	0	0	0	0
Hearing Impaired	0	0	0	0
Deaf	1	1	1	1
Deaf-Blind	0	0	0	0
Traumatic Brain Injury	0	0	0	0
Total Child Count	78	78	69	67

Special Education Placement Categories

	2003-04	2004-05	2005-06	2006-07
Regular Classroom	48	39	29	35
Resource Room	16	17	22	17
Early Childhood Special Ed Setting	4	7	5	5
Early Childhood Setting	0	1	1	3
Self-Contained Classroom	2	1	5	5
24-Hour Program	3	2	0	0
PT Early Child/ PT Early Child SE	3	10	6	1
Home	0	0	0	0
Residential Facility	0	0	0	0
Separate School	0	0	0	1
Day Program	1	1	1	0
Home/Hospital Program	1	0	0	0
Total	78	78	69	67



3 – College Admissions

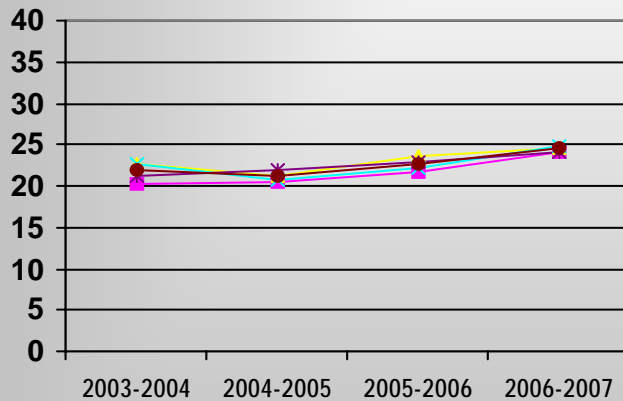
Elk Point-Jefferson High School ACT Results

	2003-04	2004-05	2005-06	2006-07
Number tested	27	36	33	30
English	20.2	20.6	21.6	24.2
Math	22.7	21.1	23.5	24.6
Reading	22.6	20.8	22.2	24.7
Science	21.3	22	22.9	24.1
Composite Score	21.9	21.3	22.7	24.5

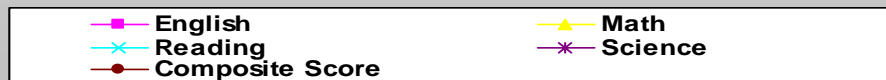
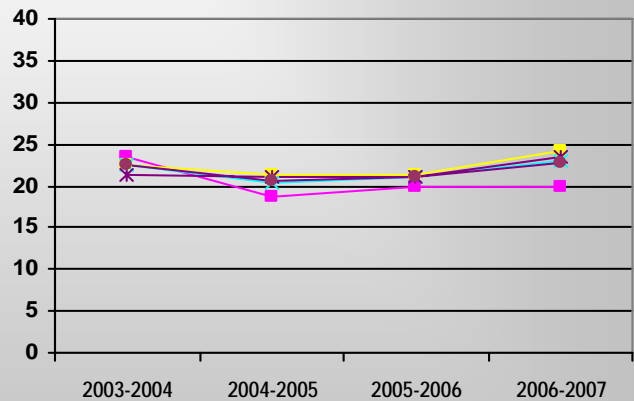
ACT State Results

	2003-2004	2004-2005	2005-2006	2006-2007
Number tested	7,406	7,170	6,807	6975
English	20.7	20.8	21.0	21.3
Math	21.4	21.3	21.6	21.6
Reading	21.8	21.7	22.0	22.0
Science	21.6	21.6	21.8	21.6
Composite Score	21.5	21.5	21.8	21.9

Elk Point-Jefferson High School Scores



State Scores





4 – Dakota Step Results - Reading

Individual grade level achievement is not used to determine Adequate Yearly Progress (AYP), but it is reported on the State Report Card.

Percent of Students Proficient or Advance (by grade)

		2003-04	2004-05	2005-06	2006-07
3 rd Grade	All Students	91	96	98	94
4 th Grade	All Students	87	88	94	89
5 th Grade	All Students	90	84	85	88
6 th Grade	All Students	83	94	90	89
7 th Grade	All Students	86	84	92	89
8 th Grade	All Students	90	96	88	94
11 th Grade	All Students	83	85	92	91

Percent of Students Proficient or Advanced (by grade level groupings)

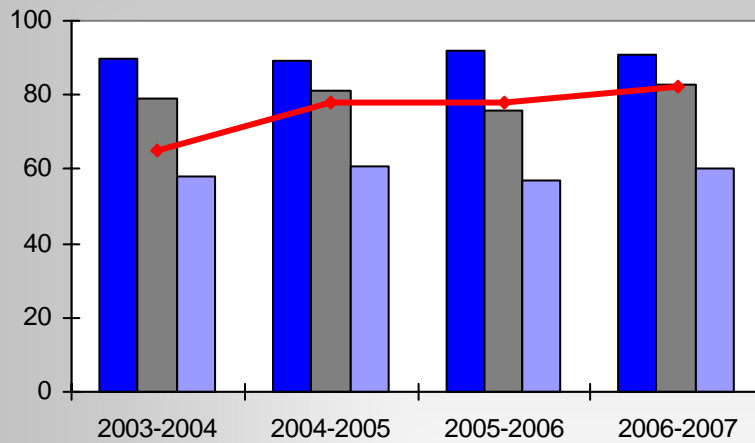
		2003-04	2004-05	2005-06	2006-07
Grades 3-5	All Students	90	89	92	91
	Economically Disadvantaged	79	81	76	83
	Students with Disabilities	58	61	57	60
Grade 6-8	All Students	89	89	90	91
	Economically Disadvantaged	83	88	86	88
	Students with Disabilities	60	73	*	*
Grade 11	All Students	83	85	80	83
	Economically Disadvantaged	*	*	*	*
	Students with Disabilities	*	*	*	*

* Does not meet the minimum number of students (10) for this category.

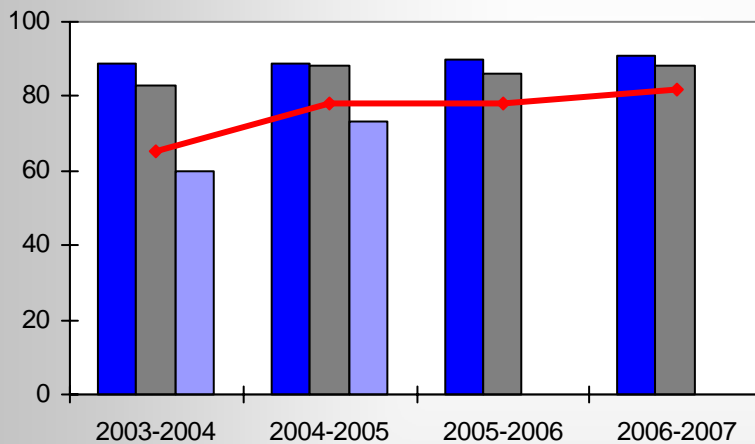
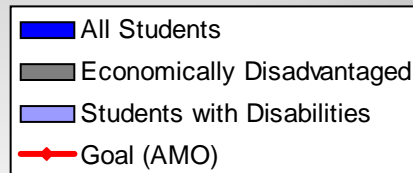
Graphs of the data are on the next page



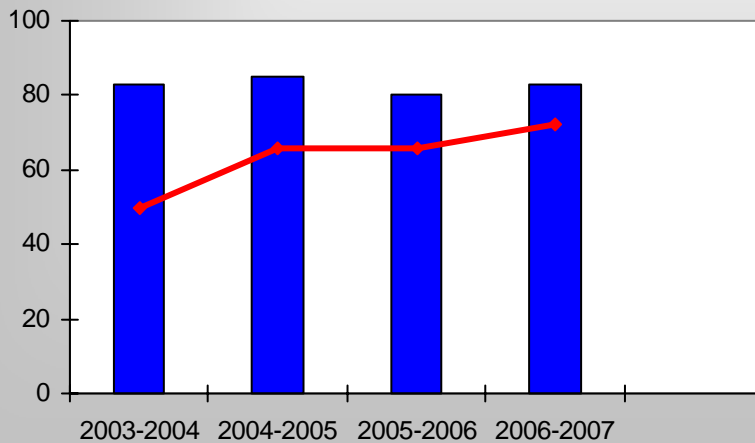
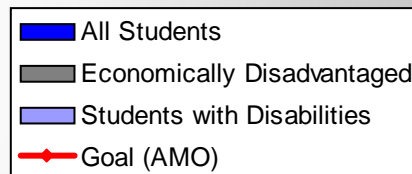
4 – Dakota Step Results in Reading -- Charts



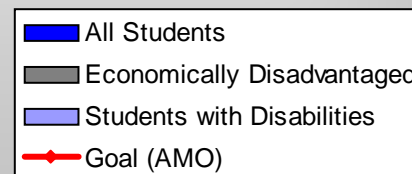
Percent Proficient or Advanced in Reading by Subgroups (Grades 3-5)



Percent Proficient or Advanced in Reading by Subgroups (Grades 6-8)



Percent Proficient or Advanced in Reading by Subgroups (Grades 9-12)





5 – Dakota Step Results - Mathematics

Individual grade level achievement is not used to determine Adequate Yearly Progress (AYP), but it is reported on the State Report Card.

Percent of Students Proficient or Advance (by grade)

		2003-04	2004-05	2005-06	2006-07
3 rd Grade	All Students	81	89	89	93
4 th Grade	All Students	74	84	82	72
5 th Grade	All Students	88	79	65	76
6 th Grade	All Students	81	87	74	75
7 th Grade	All Students	81	70	80	78
8 th Grade	All Students	86	82	79	85
11 th Grade	All Students	95	88	70	74

Percent of Students Proficient or Advanced (by grade level groupings)

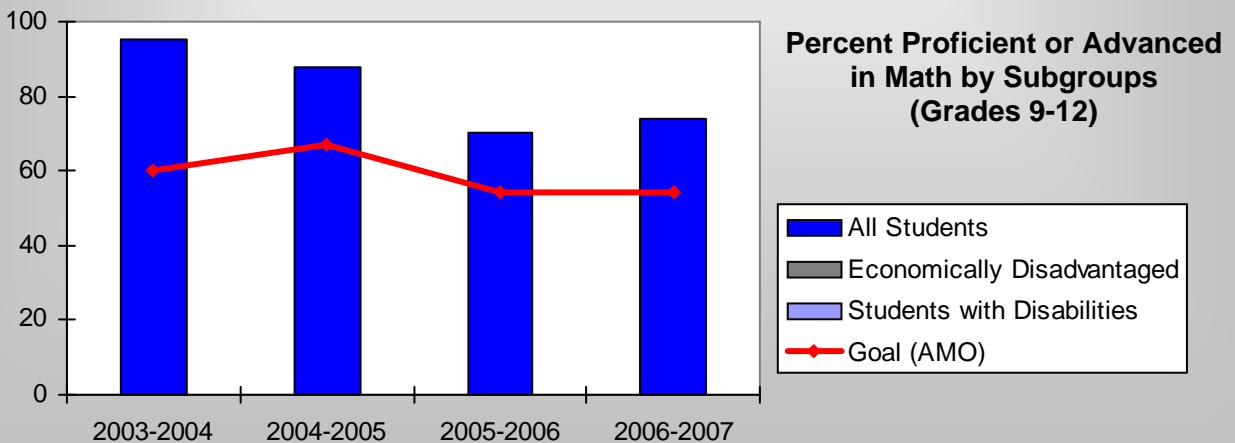
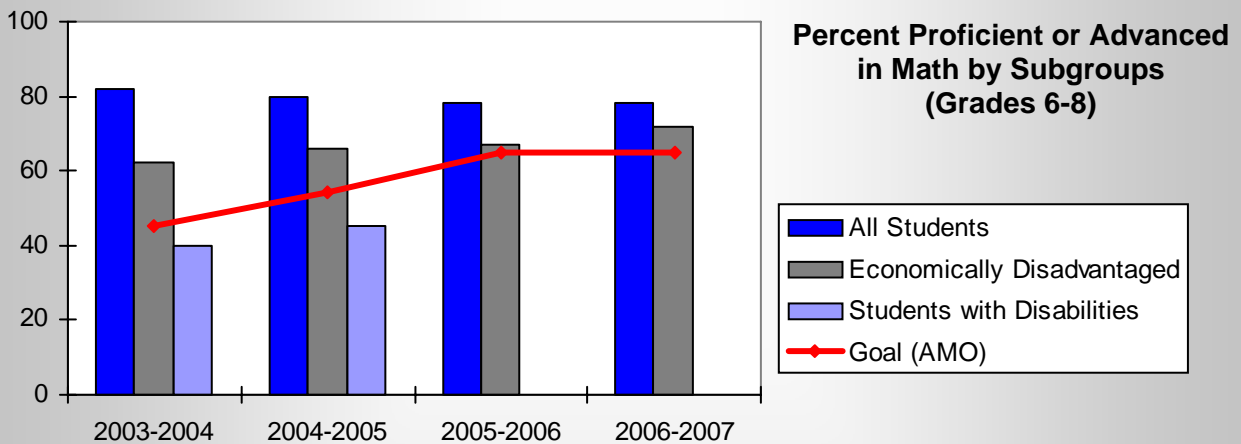
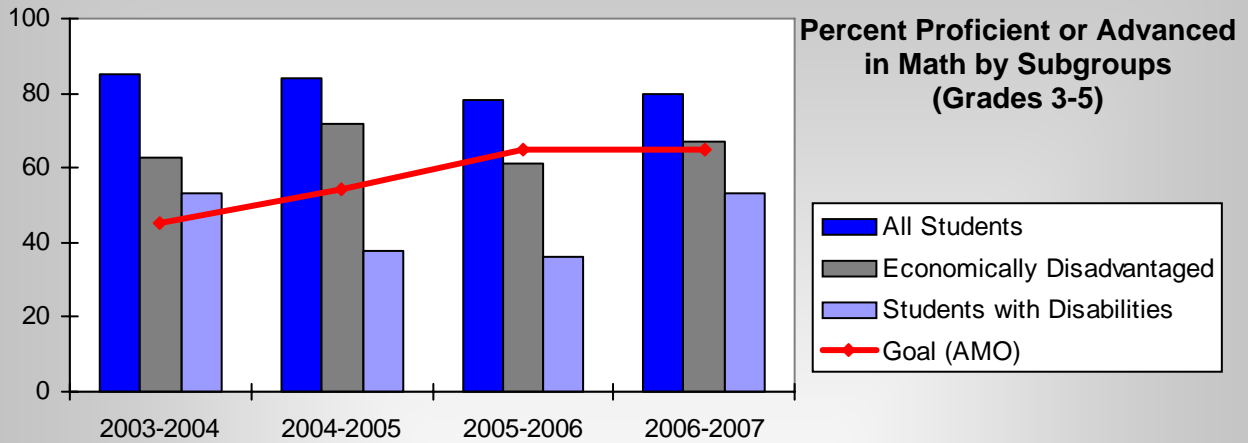
		2003-04	2004-05	2005-06	2006-07
Grades 3-5	All Students	85	84	78	80
	Economically Disadvantaged	63	72	61	67
	Students with Disabilities	53	38	36	53
Grade 6-8	All Students	82	80	78	78
	Economically Disadvantaged	62	66	67	72
	Students with Disabilities	40	45	*	*
Grade 11	All Students	95	88	70	74
	Economically Disadvantaged	*	*	*	*
	Students with Disabilities	*	*	*	*

* Data for individual subgroups is not reported on the South Dakota State Report Card or used to determine Adequate Yearly Progress (AYP) when fewer than 10 students are tested in that subgroup.

Graphs of the data are on the next page



5 – Dakota Step Results in Mathematics -- Charts





6 – Stanford Writing Assessment

5th Grade

	2003-04	2004-05	2005-06	2006-07
Ideas and Development	85	75	61	78
Organization, Unity and Coherence	85	61	57	80
Word Choice	85	77	57	78
Sentences and Paragraphs	85	56	56	76
Grammar and Usage	85	66	44	74
Writing Mechanics	85	63	38	62

9th Grade

	2003-04	2004-05	2005-06	2006-07
Ideas and Development	88	89	93	85
Organization, Unity and Coherence	78	89	93	87
Word Choice	86	94	90	87
Sentences and Paragraphs	73	90	75	83
Grammar and Usage	78	90	79	77
Writing Mechanics	82	86	79	83

Elk Point - Jefferson School District Data Profile



7 – Adequate Yearly Progress (AYP)

District Level Summary

	2003-04		2004-05		2005-06		2006-07	
	AYP	Status	AYP	Status	AYP	Status	AYP	Status
Test Participation	Y	OK	Y	OK	Y	OK	Y	OK
Grad Rate	Y	OK	Y	OK	Y	OK	Y	OK
Attendance	Y	OK	Y	OK	Y	OK	Y	OK
Reading	Y	OK	Y	OK	Y	OK	Y	OK
Math	Y	OK	Y	OK	Y	OK	Y	OK

Building Level Summary (Elementary School)

	2003-04		2004-05		2005-06		2006-07	
	AYP	Status	AYP	Status	AYP	Status	AYP	Status
Test Participation	Y	OK	Y	OK	Y	OK	Y	OK
Attendance	Y	OK	Y	OK	Y	OK	Y	OK
Reading	Y	OK	Y	OK	Y	OK	Y	OK
Math	Y	OK	Y	OK	Y	OK	Y	OK

Building Level Summary (Middle School)

	2003-04		2004-05		2005-06		2006-07	
	AYP	Status	AYP	Status	AYP	Status	AYP	Status
Test Participation	Y	OK	Y	OK	Y	OK	Y	OK
Attendance	Y	OK	Y	OK	Y	OK	Y	OK
Reading	Y	OK	Y	OK	Y	OK	Y	OK
Math	Y	OK	Y	OK	Y	OK	Y	OK

Building Level Summary (High School)

	2003-04		2004-05		2005-06		2006-07	
	AYP	Status	AYP	Status	AYP	Status	AYP	Status
Test Participation	Y	OK	Y	OK	Y	OK	Y	OK
Graduation	Y	OK	Y	OK	Y	OK	Y	OK
Reading	Y	OK	Y	OK	Y	OK	Y	OK
Math	Y	OK	Y	OK	Y	OK	Y	OK



Elk Point - Jefferson School District Data Profile

8 – Notes and Definitions

An Overview of NCLB information can be found at: <https://sis.ddncampus.net:8081/nclb/overview.html>

Schools are assigned a School Improvement Level equal to the highest level of the objectives. For a more extensive explanation of the school improvement process and sanctions, see: <http://doe.sd.gov/nclb/index.asp>

Improvement Status indicates the level of School Improvement that the school (or district) will be in for the next year. AYP must be missed in the same objective for two consecutive years for Improvement Status to begin. To be removed from School Improvement, AYP must be met for two consecutive years.

Alert (Did not meet AYP for one year.)

Level 1, 2, 3, 4 (Identified for Improvement – did not meet AYP) School or district is subject to State Requirements and additional Title I sanctions assigned to that level. See the Department of Education website for details.

Subgroups identified for testing accountability include the following. Testing results are not reported for subgroups with fewer than 10 students due to confidentiality. Schools and districts are also not held accountable for AYP for subgroups numbering fewer than 10 students.

- All (all students tested)
- White
- Native American
- Hispanic
- Black/African American
- Asian/Pacific Islander
- Students with Disabilities
- Limited English Proficiency
- Economically Disadvantaged

High schools are accountable for graduation rate. Middle and elementary schools are accountable for attendance rate. All grades are accountable for test participation.

Adequate Yearly Progress (AYP) may be met in a number of ways: achieving at or above the AMO (Annual Measurable Objective), averaging two consecutive years' scores, Safe Harbor (moving 10% of students from the Basic/Below Basic categories to Proficient or Advanced), or by Confidence Interval (formula allowance for small subgroup numbers).

By 2014, schools are expected to show 100% of students proficient or advanced in mathematics and reading. The Annual Measurable Objective (AMO) that schools must meet will gradually increase until 2014, and schools will be accountable for the gradually increasing AMO in order to meet Adequate Yearly Progress (AYP).

This District's Profile:

This profile summarizes data reported by the South Dakota Department of Education and other entities for the Montrose School District. It is designed to share longitudinal data and does not include interpretations of that data. Adequate Yearly Progress (AYP) is not measured by all of the data in this profile.

Please feel free to make additional copies of this profile. For customized profiles contact Education Service Agency, Region 2.

715 East 14th Street, Sioux Falls, SD 57104

605.367.7680

esa2@edec.org

on the web at:

www.edec.org/esa